



# MONTHLY MEMBERSHIP PROGRESS REPORT

District 14 N

Results as of: 11/30/2017

GMT: CINDY GREGG

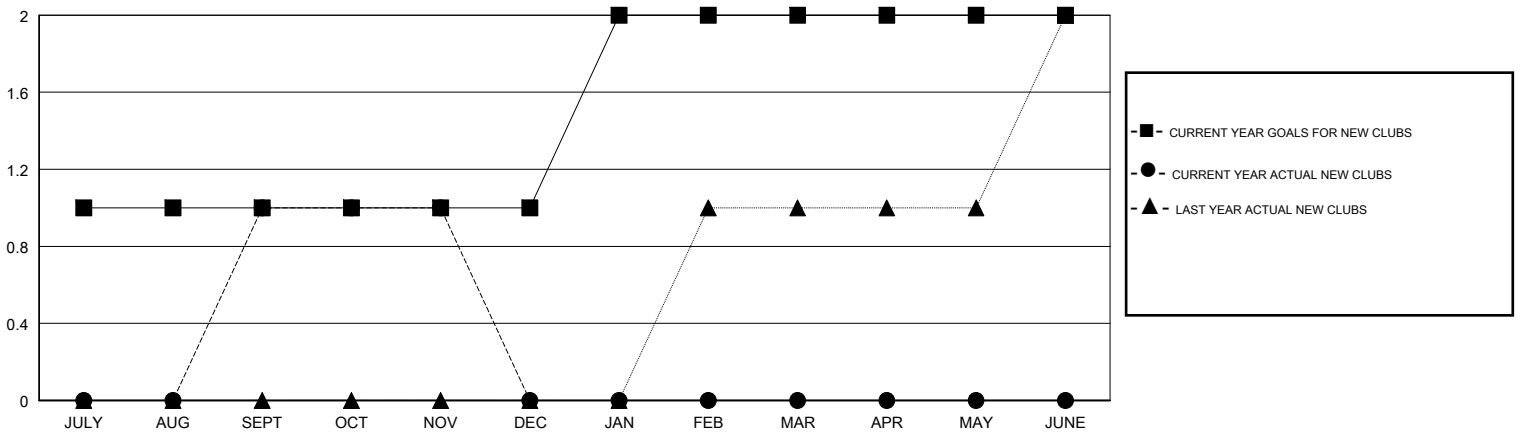
LOCATION PENNSYLVANIA

GMT CA

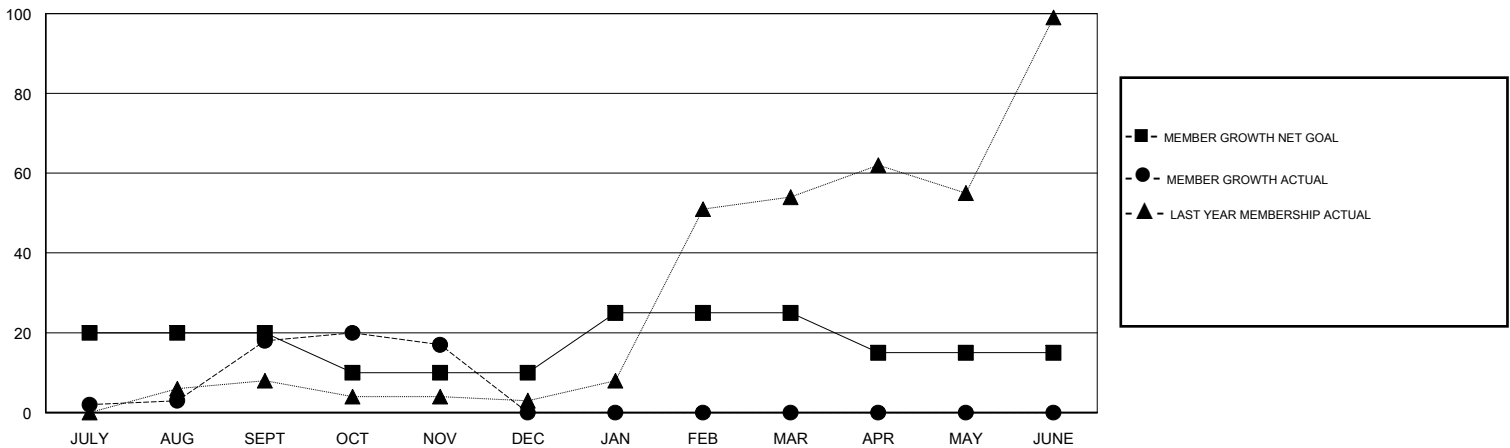
Clubs			
RESULTS FOR 2017-2018			
QUARTER	NEW CLUB GOAL	NEW CLUBS	DROPPED CLUBS
JULY/AUG/SEPT	1	1	0
OCT/NOV/DEC	0	0	0
JAN/FEB/MAR	1	0	0
APR/MAY/JUNE	0	0	0

Members			
RESULTS FOR 2017-2018			
QUARTER	MEMBER GROWTH NET GOAL	MEMBER GROWTH ACTUAL	DROPPED MEMBERS ACTUAL (including transfers)
JULY/AUG/SEPT	20	39	17
OCT/NOV/DEC	-10	18	18
JAN/FEB/MAR	15	0	0
APR/MAY/JUNE	-10	0	0

GOALS AND ACTUAL NEW CLUBS CUMULATIVE



GOALS AND ACTUAL MEMBERS CUMULATIVE



DROPPED CLUBS: 0
------------------

13 CLUBS OF 40 ADDED 1 OR MORE NEW MEMBERS

GENDER DISTRIBUTION	
MALE	770 (71.36%)
FEMALE	309 (28.64%)
Women Percentage Fiscal Year Goal: 30%	

DROPPED MEMBERS	
DECEASED	5
CLUB CANCELLED	0
OTHER	30
<b>TOTAL</b>	<b>35</b>

[CLICK HERE FOR CUMULATIVE MEMBERSHIP DATA](#)

TOTAL FAMILY UNIT MEMBERS	167
FAMILY MEMBERS PAYING HALF DUES	87